



Rear Peg Mount Kits



27-1698 Installed



27-0860 Installed



27-1698



27-1696

Adjustable Chrome Footpeg Mount Kits feature a detent locking system that allows pegs to be rotated to different positions. The new yoke provided fits into the stock female footpeg clevis on models that accept a male end peg. Order flame pegs VT No. 27-0558 separately.

VT No.	Year	Model	Type
27-1696	1983-up	FXST-FXDWG	Front
27-1698	1982-up	FXR Rear, 1990-up FLST	Rear



1986-up ST Rear Peg Mounts bolts to rear frame and repositions pegs in more comfortable position.

VT No. 27-0860



FXST Passenger Fold Up Footboard Set for all 2000-up FXST models. Includes mounting hardware, aluminum footboard and rubber pads. Replaces 50602-00.

VT No. 27-1538

1965-84 FLH



1958-84 FLH Rear Footboards. Passenger type, chrome steel. Attach by sliding into lower frame tube & bolting to same.

VT No.	Item
27-1532	Footboard Set

28-0420 Passenger Footboard Mats



FL-FLH Footpeg Risers include mounting blocks for 1965-84 models, accepts most pegs.

VT No. 27-1533



1977-84 FLH Passenger Footboard Kit includes brackets and chrome boards with rubber pads.

VT No.	Item
27-0618	Kit
27-0856	Adapter Stud



27-1592



27-0064

FLH Passenger Peg Brackets are fully adjustable for 1977-84 FLH.

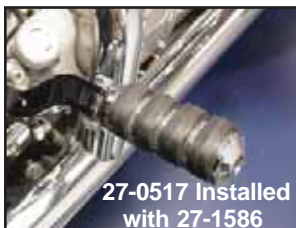
VT No.	OEM	Side
27-1578	52686-77A	Right
27-1579	52690-77A	Left
27-1592	Chrome	Set
27-0064	Polished	Set



Passenger Footboards



Chrome FLT Rear Passenger Footboard Mounts replace 52719-93 and 53070-00 for 1993-up models FLT, FLHT and FLHS. Order boards and mats separately.
VT No. 27-0561



1993-up FLT Rear Passenger Peg Brackets are adjustable type to replace stock rear footboards. Order male pegs separately.

- | | |
|---------------|-------------------------|
| VT No. | Item |
| 27-0517 | Peg Brackets |
| 27-1586 | Large Soft Pegs (shown) |
| 27-0564 | Kit |



FLT Passenger Footboard Kit. Footboards fold up when not in use. Kit includes footboards and mounting hardware. Fits all 1993-up FLT models.
VT No. 27-0085

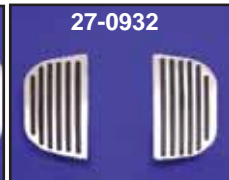


1987-up Stock Black Passenger Footboard Rubber fits factory passenger floor boards. Each.
VT No. Style
28-2120 Blocks
28-2148 Ribbed



Chrome Replica Rear Passenger Floorboards fit all OE style brackets and accept rubber pads from 1986-up.

- | | |
|---------------|--------------|
| VT No. | Item |
| 27-0500 | Board |
| 27-0693 | Flame Insert |



Chrome Billet Rear Passenger Footboards fit 1986-up FLT models. Chrome insert features inlay rubber pad.

- | | |
|---------------|-------------|
| VT No. | Type |
| 27-0931 | Diamond |
| 27-0932 | Rib |
| 27-0933 | Flame |

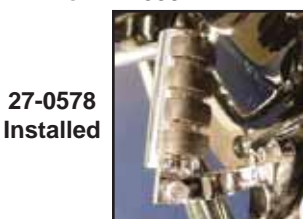


Chrome Trim Footboard Rubbers fit 1993-up FLT models, pair. Units pop into stock footboard base.
VT No. 27-0580



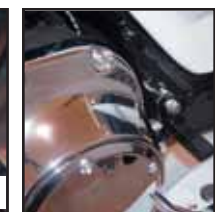
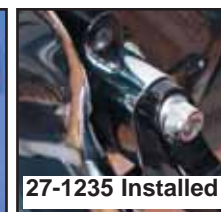
FLT Chrome Passenger Footboard Covers fit fold up type factory cast boards. Includes 2 covers with 4 self tapping screws.

VT No. 27-1599



1993-up FLT Rear Peg Kit includes chrome brackets and large soft peg set. Replaces rear passenger floor guards.

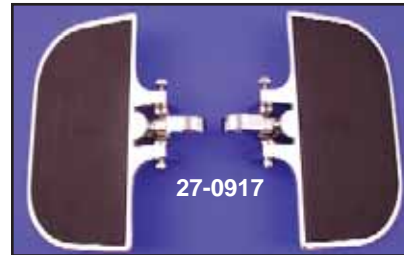
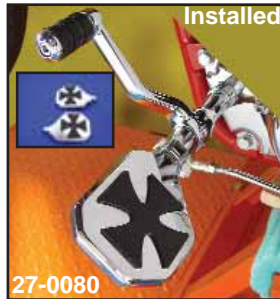
VT No. 27-0578



1" Floorboard Extender fit 1993-up FLT.
VT No. 27-1235



Mini Footboards



Chrome Mini Bullet Boards are used to replace passenger pegs with male clevis mount. Can also be installed on engine guards with appropriate clamps.

VT No.	Style	VT No.	Style
27-0691	3 Pad	27-0880	5-Rail
27-0080	Maltese	27-0882	Diamond
27-0881	Wave	27-0883	Flame



Universal Adjustable Mini-Footerboard Kits for Highway Bars measures 7 1/4" x 3 1/2" and are designed to clamp-on to highway bars and feature vibration absorbing dampers in the footboards. In addition to having 7/8" of fore-to-aft movement, they may also be rotated in a 360° arc.

VT No.	Size
27-0667	1"
27-0668	1 1/4"



Adjustable Driver's Mini-Footerboard Kit measures 7 1/4" x 3 1/2" male end. Fits into stock female footpeg clevis on models with forward controls and features 7/8" of fore-to-aft movement, they may be rotated in a 360° arc.
VT No. 27-0669

Chrome Mini-Footerboards feature non-slip rubber surface and mounting studs. VT No. 27-0909 for use with 27-0056, 27-0060, 27-1531, or on front type with 27-0607, 27-0609, 27-0610, 27-0608 or on existing plates which have hole for stud type mounting. Boards measure 8" x 4 1/4" overall.

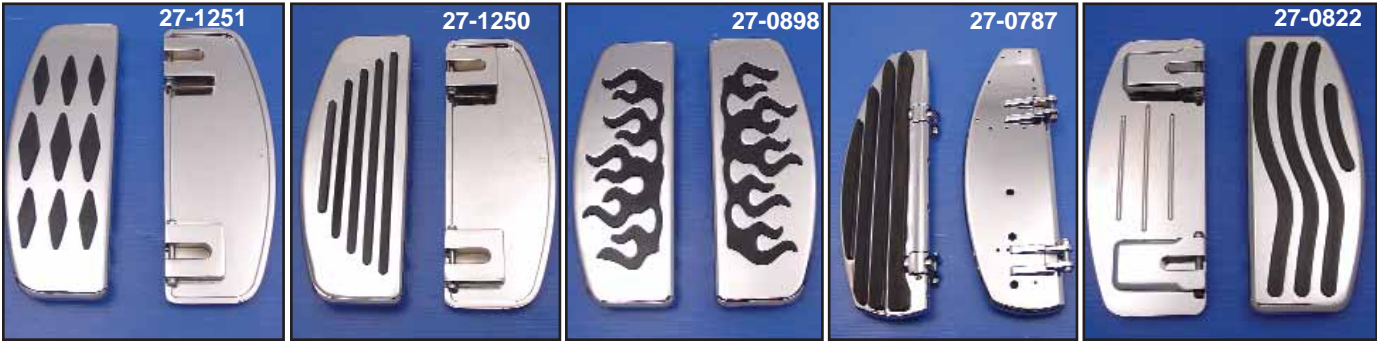
VT No.	Type
27-0909	Stud Type
27-0917	Rubber Style
27-0928	Flame Style
27-0929	Rail Style
27-0930	Diamond Style
27-0852	Wave
28-0613	Black Rubbers
27-0940	Shamrock



Billet Mini Footboards fit passenger peg mounts that accept male pegs.
VT No. 27-0793



Billet Driver Footboards



Billet Footboard Set is chrome with black molded rubber insert.

FLST-FLT	FLH	FLH	
1980-up	1940-84	1940-84	
"D" Shape	"D" Shape	Half Moon Shape	
27-1251	27-1204	27-1200	Diamond
27-1250	27-1203	27-1201	Rail
27-0898	27-1205	27-1202	Flame
27-0782	—	—	Bar
27-0787	—	—	Dreamer
27-0822	—	—	Wave



Long John Billet Board Set fits 1980-up FLT, 1986-up FLST. VT No. 27-0012



Replacement Footboard Pads include Iso buds molded in for 2004-up stream line footboards.

VT No.	Side
27-0958	Right
27-0959	Left



Chrome 'D' Shaped Footboards feature ISO design with rubber inserts in stainless steel grid. Pair. Fits 1979-up and 1986-up FLST. VT No. 27-0923

Chrome Steel Driver Footboards



Chrome 'D' Shaped Footboards include rubber pads. The 1974-up Iso boards feature a raised footboard pad with anti-vibration rubbers. Sold in pairs.

VT No.	OEM	Year/Model	Type
27-0904	50603-66	1966-73 FL	Solid
27-0903	50603-74A	1966-85 FL	Iso Type
27-0918	Kit	1966-85 FL	With brackets
27-0906	50621-79	1979-up FLT 1986-up FLST	Iso Type



Forward Mount Footboard Pans will extend the rider to a more comfortable position pans accept original or accessory board inserts. Replacing 50409-04. Fits 2002-up and 97-01 w/23-0668. VT No. 27-0798



Flame Footboard Inserts or available as complete board set. Fit 1980-up FLT.

VT No.	Item
27-0584	Inserts
27-0692	Complete Board Set



Streamliner Footboard fits 1986-up FLT, FLST. VT No. 27-0501



Half Moon Footboards



Vintage Footboard Sets feature classic oval design with "shaker" Iso-mount cushion area. Black pads included.

VT No. Fits
27-0912 1940-84 FLH
27-0927 1940-84
27-0914 1986-up FLST,
 1980-up FLT



Oval Style Shape Footboards fit the stock mounting brackets on 1940-84 FL. Footboards replaces 50603-40.

VT No.	Finish	Mats
27-0907	Black	Rubber
27-0908	Chrome	Rubber
27-0943	Chrome	Without
27-1562	Chrome	Metal
27-0900	Chrome	H-D Logo

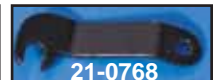
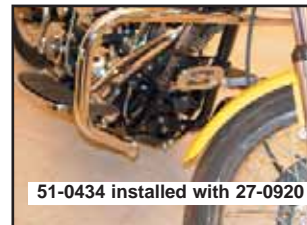
Adjustable Footboard Kits



Adjustable Footboard Kits permit a full 7" fore-aft adjustment along with angle and height adjustability. Kits are designed to fit 1980-86 FXWG, 1984-up FXST and 1990-up FLST and fit wherever a male clevis style footpeg mounts. Complete with hardware.

VT No.	Item	Type
27-1595	Oval	Shaker
27-1594	D Style	Shaker
27-0741*	D Style	Shaker
27-1612	D Style	Solid
27-1670	Oval	Solid
27-0784	—	Brackets

*Note: Passenger Style Size



Wyatt's Floorboard Kit for FXD is designed for use on all 1996-2009 FXD models. It features the same style used on all touring models to maximize rider comfort. The kit comes complete with floorboards and mounts, brake pedal, an extended brake rod and a one piece chrome heel toe shifter and all mounting hardware. The floorboard kit also allows the use of OEM style engine guard VT No. 51-0434 sold separately.

VT No.	Item	Fits
27-0920	Kit	1999-09

Mid Shift Lever Retainers will secure inner primary shift lever when installing forward controls.

VT No.	Year
21-0766	1991-05
21-0768	2006-up



Footboard Inserts



Chrome Footboard Trim. Footboard Set inserts are fitted to an iso-mount footboard top to fit 1974-up FL-FLT-FLST
VT No. 27-1705



Chrome Billet Footboard Pad Set features Billet construction with built in rubber strips on surface. Rubber Iso-Mount included which plug into stock board on 1980-up FLT, 1986-up FLST.
VT No. 27-0924



Chrome Billet Footboard Pads include Iso bushings for 1966-up Big Twins.

VT No. Item
27-1054 Board Set
27-0570 Pad Set

Footboard Mats



28-0414



28-0405




A



B

Footboard Mats sold in pairs. Must be affixed by adhesive or rivets, on earlier models.

VT No.	#	Year	Color
28-0413	A	1966-up	Black
28-0414	A	1966-up	White
28-0429	A	1966-up	Teal
28-0430	A	1966-up	Orange
28-0431	A	1966-up	Blue
28-0432	A	1966-up	Yellow
28-0404	B	1940-65	Black, H-D
28-0405	B	1940-65	White, Plain
27-0597			Rivets, 28 piece

 **Footboard Rivets** for use 1914-65 replaces 50616-14, 28 pack. **VT No. 27-0597**



27-1574



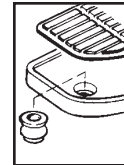
Upper Footboard Plate for 1974-91. Includes 8 Iso-Buds with 2 upper plates and rubber mats, 1992-up has Iso-Buds molded in for updated design.

VT No. OEM Fits U/M
27-1574 50619-74A 1974-91 FL-FLT Pair
27-1666* 50614-91 1992-up FLST-FLT Each

*Note: Can be used on all 1974-up type Iso footboards.



28-0416



Iso-Mount Buds. Set of 10, replaces 50620-74 for footboards, 1974-up FLH-FLT.

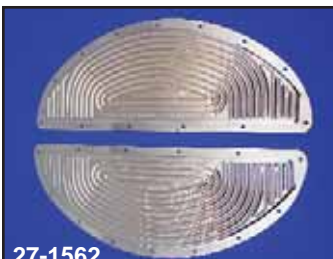
VT No. 28-0416

Iso Boards and Replacement Parts first offered by V-Twin in 1985.

Footboard Trim



Chrome Footboard Deco Trim fits 1966-up FL-FLT boards, set is complete for two boards, drill template included.
VT No. 27-0505



27-1562



27-0911

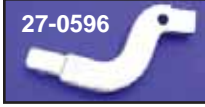
Chrome Footboard Insert Set with rib design for deco look. Pairs.

VT No. Years
27-1562 1940-65
27-0911 1966-up



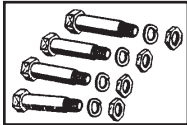
Footboard Mount Kit for aluminum primary models 1965-84 FL-FX, when using custom pipes, includes extended front footboard bracket for needed clearance.

VT No. 27-0599



Rear Footboard Brackets fit 1970-84 FLH, 31-0098 is for use with drag or custom pipe sets when footboards are used. Zinc plated.

VT No.	OEM	Type
27-0596	50655-70	Stock
31-0098	Custom	Drag Pipe



Footboard Bolt Set. 4 piece set of hinge bolts with nuts. Replaces 50635-14.

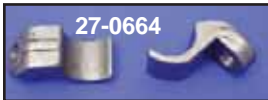
VT No.	Type
8773-12	Cadmium
9685-12	Parkerized
2125-12	Zinc



Chrome Splined Footpeg Supports for FX-FL.

VT No.	OEM	Side/Item	Type
27-0055	52695-77	Left, Support	Straight
27-0045	52700-65	Right, Support	Offset
27-1563	52688-65	Right, Bracket	Plate
42-0630	60513-71	Left, Chr Inspt.Cover	With spline
37-0155	2356	Chrome Screws	For Above
27-0046*	50921-83	FXR Stud	With spline
12-0201	23985-18	Key for Above	

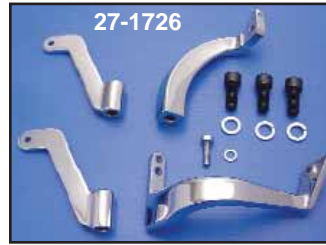
*Note: Stud is keyed for positive mount.



Footboard Tabs can be welded on 1936-84 Big Twins. Available in stamped or authentic forged steel construction for custom or stock frames. Sold in pairs.

VT No.	Dia.	Type
27-1560	1 1/8"	Forged, exact
27-0311		Stamped tabs
27-0664	1"	Forged, exact

Footboard Brackets



Chrome Footboard Mount Set for FLT is a 4 piece set. Available in stock or +2" forward.

VT No.	Type	Finish	Year
27-1726	Stock	Chrome	1983-08
27-0811	+2"	Chrome	1983-08
27-0812	+2"	Black	1983-08
27-1793	Stock	Chrome	2009-up



Aluminum Primary Footboard Mounting Kit fits BT 1965-84 FLH-FXE models equipped with FL type forward controls and primary cover with footboard tab.

VT No.	OEM	Item/Note
27-0606	Complete	Kit
27-0636	50657-70A	Right Front Stud, short
27-0596	50655-70	Right Rear Bracket
27-0637	50658-70A	Left Front Stud, long
27-1621	50659-70	Right Front Stud

Note: (A) includes extended rear footboard bracket when using custom drag or muffler pipes.



Pre-1984 Big Twin Footboard Boot Guard available for all Big Twins using "D" shaped style footboards. The right side guard keeps the heel of your shoe from the hot exhaust pipe. Both

sides provide 90 degree of resting position and also prevent your feet from sliding off the back of the footboards.

VT No.	Fits
27-0150	Right and Left
27-0151	Right Side Only